



UNIVERSITY OF
LIVERPOOL

ONLINE PROGRAMMES

Unleash your potential, anywhere
We are the original redbrick.

WELCOME TO OUR ONLINE PROGRAMMES PROSPECTUS.

Read on for an introduction to our university, and an at-a-glance guide to the online postgraduate programmes we offer.

To find out more

Go online online.liverpool.ac.uk

Download a programme booklet

online.liverpool.ac.uk/booklet

Book your place on one of our online events

online.liverpool.ac.uk/events

Connect with us:

 @LivUniOnline

 @LivUniOnline

 @LivUniOnline

 livunionline

 livunionline

CONTENTS

Find your future 04

Welcome to Liverpool 06

An online qualification you can be proud of 08

Learning on demand 10

Supporting your studies 12

Join the class of Liverpool 14

Careers 16

Online programmes quick view 18

What's next? 78

Your application 80

Tuition fees 82

A-Z programme index 84

For the most current information on our programmes, including entry requirements and modules, visit: online.liverpool.ac.uk/all-programmes/



Find your future

Original and inclusive for over 140 years, we're a truly inspirational learning institution whose students develop a rich world view, as well as the skills and confidence to thrive in today's connected world.

AN INSPIRATIONAL CENTRE OF LEARNING

The University of Liverpool was founded in 1881, for the advancement of learning and the ennoblement of life. The original 'redbrick' university, we were civic from the start – welcoming learners from across the city and beyond.

Today, we're an internationally renowned, globally connected Russell Group university, associated with nine Nobel Prize winners, and home to highly respected research and lively, original thinking. We've come a long way in 140 years. But wherever you learn with us, you'll find the same distinctive and welcoming culture that we've always had.



WORLDWIDE REPUTATION FOR EXCELLENCE

We are proud to be one of the UK's leading research institutions with an annual turnover of £583.5 million, including £95 million for research.

Our academics and researchers are pioneers of innovation and discovery. Our interdisciplinary research, unique model for collaborations and cutting-edge facilities all enable our research community to create global solutions to improve health, create wealth and ensure social justice.



WORLD-CLASS TEACHING AND LEARNING

Our teaching, like our research, is at the forefront of knowledge and is delivered by leading and internationally renowned academics. As a master's student you will learn about the latest advances in your subject and benefit from being part of a department that is contributing to these developments.

We also deliver modules which focus on research methods on all of our master's programmes. This will equip you with the research and development skills needed to successfully complete your dissertation – and prepare you for your next steps, whether that's further research or career development.

YOUR GLOBAL NETWORK

From the moment you join us at Liverpool you will join our global network and benefit from its reach. You will meet and study with students from across the world and establish life-long networks and friendships that extend beyond your time studying with us.

Studying an online degree with Liverpool opens up your boundaries with our online students based in over 189 countries around the world. After you graduate you will join a global community of more than 258,000 alumni, with a network of Ambassadors and Alumni Associates who will support you wherever you are located.



Welcome to Liverpool

The University of Liverpool was one of the first UK universities to offer degrees fully online. We have over 20 years' experience of delivering an enriched educational experience for a global community of students seeking career and life-transforming learning and qualifications. Through our programmes, you will acquire the vital skills and knowledge to become a problem solver, with the ability to challenge and question, and to devise innovative solutions as a leader in your field. We could not be more proud of our online students and the exceptional contributions that they have gone on to make in the application of their learning. We are absolutely committed to supporting you to reach your personal and career goals and wish you a truly enriching experience as we embark on your learning journey together.



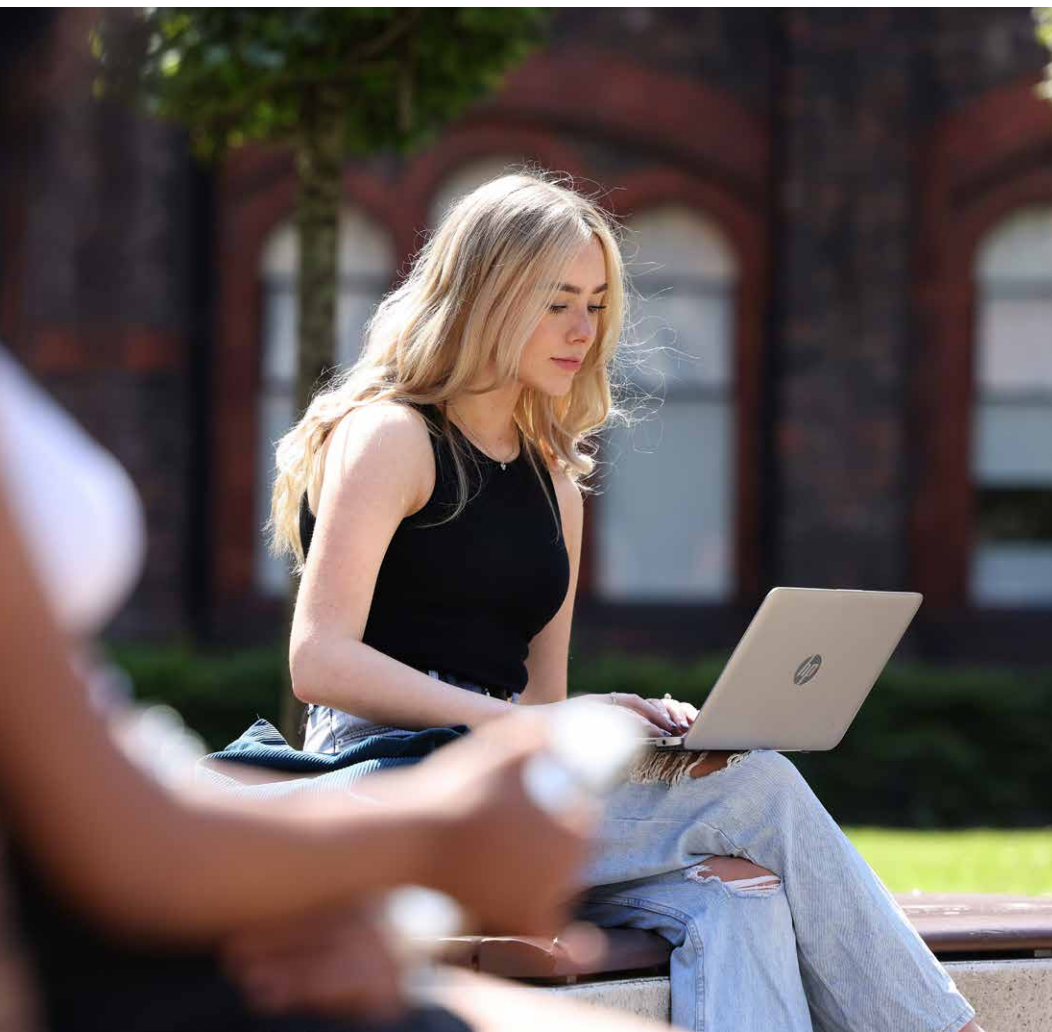
Professor Gavin Brown

*Pro-Vice-Chancellor for Education
at the University of Liverpool*



An online qualification you can be proud of

The University of Liverpool has more than 20 years' experience of providing high quality online degree programmes for students worldwide. We are recognised as European leaders in 100% online postgraduate education.



Our innovative online degrees provide flexible study options for individuals with busy lives. You can study from a library, café or even the comfort of your own sofa with your laptop, tablet or mobile phone. Your study materials will be available 24 hours a day and seven days a week – so there is no need to worry about missing a class when a meeting overruns or you need to pick up the children from school.

Designed for professionals, our programmes draw on your existing expertise and experience to make the academic principles you learn real and relevant. You'll be encouraged to apply your learning in your workplace where possible and discuss the outcomes with fellow students who are also experienced professionals.

IT'S VERY CONVENIENT TO
BE ABLE TO GO TO CLASS
ANYTIME, ANYWHERE AND GET
ACCESS TO THE UNIVERSITY
LIBRARY 24/7.
I ABSOLUTELY LOVE THAT
FLEXIBILITY.

Nick Mawani
Online student

INTERACTIVE AND ENGAGING LEARNING

Through our state-of-the-art learning platform, you'll have access to all the resources you need to complete your programme. You can explore interactive study materials, catch up on discussions with classmates and read around your topic with our comprehensive library of ebooks and journals.

TAILORED SUPPORT THROUGHOUT YOUR STUDIES

Once you are accepted onto an online programme, you will be assigned to our student support team who will be available for support and guidance throughout your time studying with us. Academic support will be provided by our experienced and passionate subject tutors, who are each expert in their own field. With interactive classes and regular contact with faculty members and fellow students from across the globe, you'll never feel alone whilst studying with us.

BECOME PART OF A STRONG NETWORK

Throughout your online studies and upon graduation, you will have access to a wide range of careers resources, including opportunities to connect with employers.

Learning on demand

Our Virtual Learning Environment (VLE) is at the centre of your online study experience. It is the platform where you will find your study timetable, view interactive lecturecasts, contribute to discussion forums, access resources and submit your assignments. It is available to access at any time, on any device, from anywhere with an internet connection.



ACTIVE LEARNING

We believe that active learning is a key attribute to all University of Liverpool programmes.

The VLE promotes this principle by allowing you, as an online student, to engage regularly with interactive content, such as our lecturecasts, attend live seminars with tutors, gain access to an online library with thousands of e-books and e-journals and make use of a study skills hub.

AUTHENTIC ASSESSMENT

Authentic assessment is another key attribute to a University of Liverpool programme with students reviewed using tasks that mirror those they might undertake as professionals or citizens through choice of purpose, format, intended audience, resources, and collaborative or student-designed elements. All course assessment is done through the VLE with no requirement for students to visit an external testing or examination centre.

COLLABORATIVE WORKING

Being an online student with the University of Liverpool is far from a solitary experience. You will collaborate with others throughout your studies through group work, discussions and live sessions with your tutors.

LECTURECASTS

A lecturecast is our version of an online lecture. but rather than being a pre-recorded presentation, a lecturecast consists of several multimedia elements – including video, text, infographics, short tasks and multiple-choice questions – that allow you to fully engage with the learning material. They are available to view and revisit at any time during your programme and act as a key resource throughout your studies.

DISCUSSION FORUMS

The discussion forums are a great way for students to connect with each other to reflect on course content, share knowledge and opinions and network on a global level. They are effective in reinforcing your learning and form a basis for both our programme content and our assessment.

JOURNAL ENTRIES

The VLE is where you will make your journal entries as you progress through your studies.

These entries will often be reflective based on your learning and students are encouraged to connect their new knowledge to situations and scenarios relevant to them. You can review your entries at any time and better understand how your understanding has evolved and developed during your programme.

E-LIBRARY

The online library is a key platform which you will use throughout your online programme. With approximately 600,000 e-Books and 30,000 e-Journal titles, the library will help you find the academic sources you need throughout your studies. The library is easy to use and allows you to search for specific works or simply use a 'keyword' to find the information you need.

STUDY SKILLS HUB

The Study Skills Hub area of the VLE provides students with a wide range of materials and resources aimed at helping you develop, improve and maintain your academic skills. The resources are intended for continuous use during your studies and you can refer to them at any point during your programme.

Supporting your studies

Studying online provides a unique opportunity to balance your educational aspirations against other existing commitments, such as work and childcare. But we understand the challenges that come with this fantastic opportunity. Throughout your time as a University of Liverpool student, you will have access to a range of support services and our experienced and knowledgeable staff will do all we can to help you maximise your learning experience and achieve your goals.

STUDENT SUPPORT

Our student support team will be on hand to help and support you in all non-academic areas and ensure that you are comfortable with all aspects of your programme. They can help you with a wide range of issues and questions and signpost you to other services if necessary.

STUDY SKILLS

Our study skills team can be contacted at any point throughout your studies with advisers on hand to help you develop your academic skills – from planning your assignments, understanding academic integrity and referencing, to using the online library and improving your time management.

STUDENT WELFARE

Our student welfare team are responsible for the provision of disability support and wellbeing resources, and directing you to useful external sources of support. We recognise that sometimes life can present challenges and the team can signpost you to further assistance where this might be helpful.

DISABILITY ADVICE AND GUIDANCE

We are dedicated to providing all our students an equal opportunity to engage, learn, and succeed on their chosen programme, and students are therefore encouraged to disclose any disability so that we can put in place reasonable adjustments to best support you.



I FOUND THE STRUCTURE OF THE ONLINE PROGRAMME AND THE MODULES REALLY HELPFUL. IT MADE PLANNING, SCHEDULING, AND BALANCING THE PROGRAMME WITH WORK (AND WHATEVER REMAINING TIME THERE WAS IN ONE'S LIFE) SIGNIFICANTLY EASIER WITH THE RESULT BEING A MORE POSITIVE AND PRODUCTIVE EXPERIENCE.

David Cameron Donnachie

Canada

Join the class of Liverpool

Did you know that there are more than 280,000 Liverpool alumni across the world? In 189 countries to be exact! As an online student you will also receive an invitation to attend a graduation ceremony at the University of Liverpool campus on successful completion of your studies.



CELEBRATE YOUR ACHIEVEMENT

Although your studies take place wholly online, you won't miss out on the opportunity to celebrate alongside friends and family when it comes to graduation. You will be invited to attend in person at the University, giving you the chance to meet your fellow students as well as the staff who have supported you throughout your programme.*

GLOBALLY CONNECTED FOR LIFE

Your journey and relationship with the University doesn't end once you graduate; quite the opposite! As a University of Liverpool graduate you will have access to a wide range of benefits and services including event invitations and professional interest networks which offer professional development support.

AS A GRADUATE YOU CAN:

CONNECT with alumni around the world by joining one of our professional, academic, and social networks or by attending one of our many events.

LEARN new skills through discounted CPD study, free online journal access, and webinars.

DEVELOP your career by joining our new global eNetworking platform, Liverpool Connect, created exclusively for University of Liverpool alumni.

Liverpool Connect

Through Liverpool Connect you can benefit from the insight of our alumni community by networking and sharing professional experience. This online space allows you to network with other current students and graduates and share 'insider' information on job roles and career areas. If you're looking for a contact in a particular industry or sector, or thinking of changing careers, our online eNetworking platform lists the details of many University of Liverpool alumni, locally, nationally and internationally, so that you can find the contact you need to advance your career or develop your business.

We are enormously proud of our global alumni family and are confident that your University of Liverpool degree will be of great benefit throughout your career.

To find out more, visit liverpool.ac.uk/alumni

Careers

As a University of Liverpool online student, you will have access to a range of careers resources to support you with your career development throughout your studies. These resources include: guidance around career paths; tutorials exploring skills in demand by businesses today; access to careers coaches through a Virtual Career Studio; as well as CV support, virtual events and many more.

DIGITAL TOOLS AND RESOURCES

We provide many digital resources to enhance your skills, connect with others, and build your confidence and resilience. Our tools are designed to fit whatever stage you are at in your career thinking and will help you on the road to career success!

GRADUATES FIRST

The Graduates First platform has a wide range of online resources that our students can access including video interviews, game-based assessments, and CAPP ability and aptitude tests. It gives exclusive insight into employer recruitment stages and provides useful feedback to help students practice and improve their performance before entering the recruitment process.

THE FORAGE

The Forage platform allows you to get real experience with a virtual internship from Accenture, KPMG, Grant Thornton and many more! It simulates real world business tasks and challenges in the form of a virtual internship designed by a top employer. Employers review performance on tasks and even sometimes hire the best performers.

HANDSHAKE

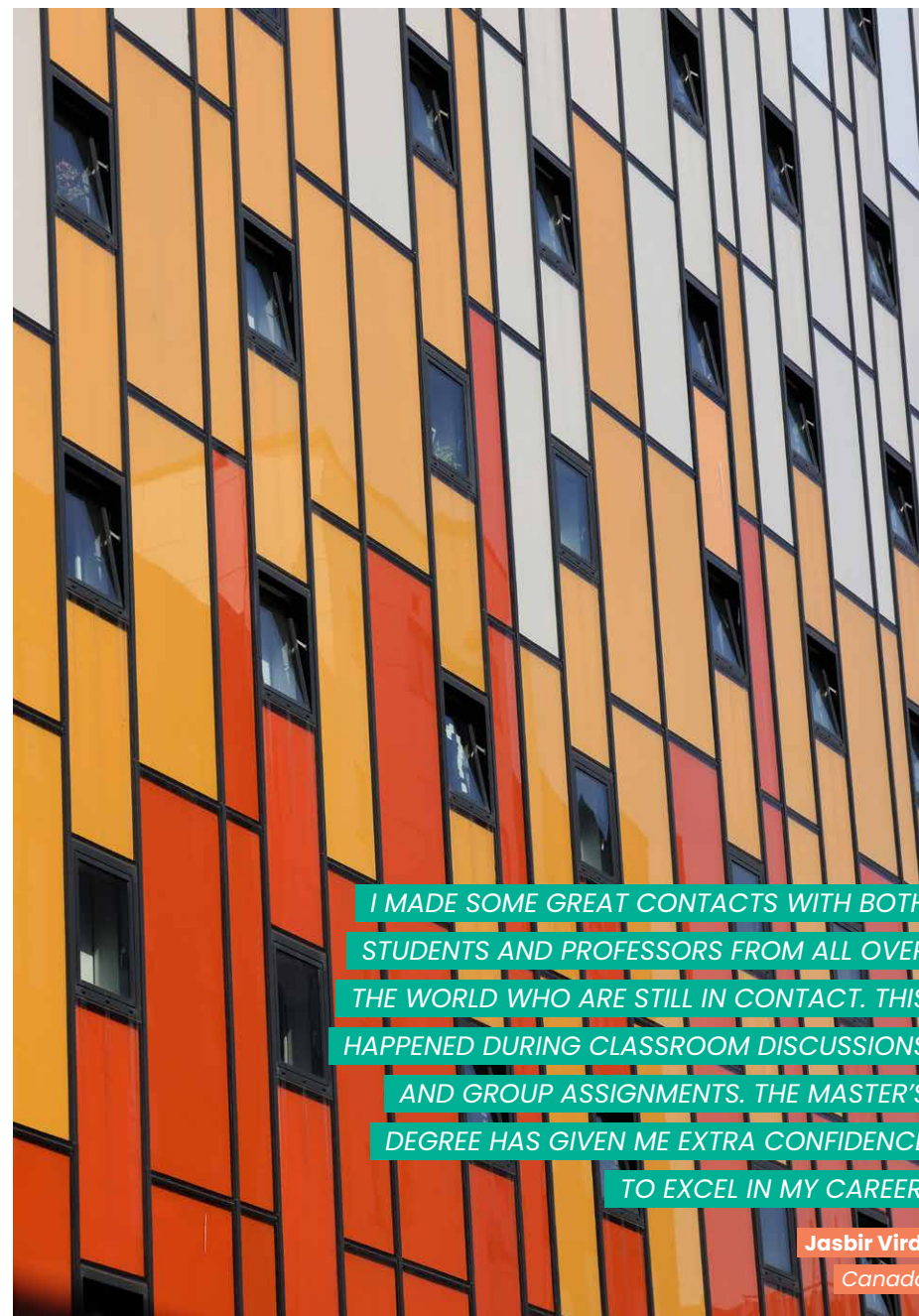
Handshake is an industry leading career networking platform. Join more than 30,000 active UK students and graduates on the Handshake community. Explore career paths, find jobs and internships, book events, and connect with employers.

LINKEDIN LEARNING

LinkedIn Learning is a leading online learning platform that helps anyone to learn business, software, technology and creative skills to achieve personal and professional goals. All students have access to the LinkedIn Learning video library of engaging courses taught by recognised industry experts.

SHORTLIST.ME

The Shortlist.Me platform has many tools to assist students with their career goals including video interview practice sessions with instant artificial intelligence reviews and the option for feedback from a career coach.



I MADE SOME GREAT CONTACTS WITH BOTH STUDENTS AND PROFESSORS FROM ALL OVER THE WORLD WHO ARE STILL IN CONTACT. THIS HAPPENED DURING CLASSROOM DISCUSSIONS AND GROUP ASSIGNMENTS. THE MASTER'S DEGREE HAS GIVEN ME EXTRA CONFIDENCE TO EXCEL IN MY CAREER.

Jasbir Viridi
Canada

Online programmes quick view

WELCOME TO THE ACADEMY

Academic Practice	22
-------------------------	----

WELCOME TO THE DEPARTMENT OF COMPUTER SCIENCE

Computer Science	26
Artificial Intelligence	28
Data Science and Artificial Intelligence	30
Cyber Security	32
Big Data Analytics	34
Information Systems Management	36

WELCOME TO THE DEPARTMENT OF PSYCHOLOGY

Psychology	40
Mental Health Psychology	42
Organisational and Business Psychology	44

WELCOME TO THE DEPARTMENT OF PUBLIC HEALTH, POLICY

AND SYSTEM

Master of Public Health (Online)	48
Master of Public Health (Online) - Global Health	50
Master of Public Health (Online) - Global Mental Health	52
Master of Public Health (Online) - Health Economics and Policy	54

WELCOME TO THE LIVERPOOL LAW SCHOOL

International Business Law	58
----------------------------------	----

WELCOME TO THE MANAGEMENT SCHOOL

Master of Business Administration (MBA)	62
Digital Marketing	64
International Human Resource Management	66
Management	68
Finance and Investment Management	70
Project Management	72

THE MANAGEMENT SCHOOL IN COLLABORATION WITH THE SCHOOL

OF MEDICINE

Healthcare Leadership	76
-----------------------------	----





We are excited to welcome students from all over the world onto the Academic Practice programme, where you are invited to participate in a contemporary interactive online learning experience within an international community of academic practice to develop and gain professional recognition for your teaching and learning and enhance your higher education careers.

Welcome to The Academy

Academic Development is part of The Leadership, Organisational, Professional & Academic Development Academy (The Academy) at the University of Liverpool. The Academy supports higher education professionals to develop their academic practice in relation to teaching and learning, as well as enhance their skills in research, leadership and management within the sector.

PROGRAMME AREAS

Academic Practice

ACADEMIC PRACTICE

Develop your academic practice and gain global perspectives on higher education with this professional postgraduate teaching qualification designed to enhance your career in higher education.

The online Academic Practice (AP) programme is a master's level course for those who wish to enhance their academic practice and develop their teaching career, providing students with invaluable teaching methods and techniques, informed by global pedagogical viewpoints.

There are three study awards for the programme – starting with the Postgraduate Certificate Academic Practice (PGCAP) and progressing to the Postgraduate Diploma (PGDAP) and full master's (MA AP). The PGCAP has two pathways depending on a student's background. For those who do not hold a substantive teaching position in higher education, our first pathway is a route to gaining a PGCAP that will provide an excellent grounding in the theory and practice of teaching and supporting learning in higher education in a global context.

For those who do hold a substantive teaching position which would enable them to demonstrate Descriptor Level 2 of the Professional Standards Framework (PSF 2023), our second pathway enables you to earn a PGCAP and simultaneously gain recognition as a Fellow of the Higher Education Academy (FHEA) through our unique partnership with Advance HE, the UK's foremost agency for driving excellence and developing leadership in higher education.

Programme at-a-glance

Qualification

Master of Arts Academic Practice (MA AP)

Postgraduate Diploma Academic Practice (PGDAP)

Postgraduate Certificate Academic Practice (PGCAP)

Duration

24 months

16 months

8 months

Study mode: online and part-time

Start dates: Throughout the year. See our website for upcoming dates. The study duration of this programme is currently subject to change and final validation.

Entry requirements

For both PGCAP pathways, applicants must have:

- A degree equivalent to a lower-second class UK bachelor's degree or equivalent.

For pathway two leading to Fellowship (FHEA), applicants must also:

- Hold a teaching position in a higher education institution with sufficient depth and breadth of practice with learners that enables them to demonstrate all dimensions of the Professional Standards Framework (PSF 2023).

If you are unsure about which pathway is best suited to you, please contact our admissions team to discuss the options open to you. All applicants from outside the UK must provide evidence that they have an English language ability equivalent to an IELTS (academic) minimum overall score of 6.5, and no less than 6 in each of the sub-tests (reading, writing, speaking, and listening) or an equivalent qualification.

If you don't have an IELTS or equivalent certificate, you can take our free online English test to assess your proficiency.

What will I study?

	MA AP	PGDAP	PGCAP FHEA Pathway	PGCAP Standard Pathway
Foundational Approaches to Learning and Teaching in Higher Education (15 credits)	Pathway Dependent	Pathway Dependent		*
Contemporary Approaches to Teaching in a Global HE Context (15 credits)	*	*	*	*
Designing Learning and Assessment in a Global HE Context (15 credits)	*	*	*	*
Enhancing Academic Practice in a Global HE Context (15 credits)	Pathway Dependent	Pathway Dependent	*	optional
Developing your Career in a Global Context (15 credits)	Pathway Dependent	Pathway Dependent	*	optional
Developing Academic Leadership (15 credits)	*	*		
Evidencing Academic Leadership (15 credits)	*	*		
Developing Scholarship (15 credits)	*	*		
Pedagogic Research Design (15 credits)	*	*		
Academic Practice Project (60 credits)	*			

Students without relevant experience teaching in higher education will complete all modules, including one optional module, in PGCAP Pathway One (Standard Pathway). Applicants with relevant experience currently teaching in higher education will do all modules in Pathway Two (FHEA Pathway) and be required to demonstrate Descriptor 2 of the Professional Standards Framework (PSF 2023) to achieve PGCAP and FHEA Fellowship. Students who progress to the final award, the MA AP, will engage in an Academic Practice Project relevant to their higher education careers and develop their scholarship of learning and teaching.

Where can this take me?

The global emphasis of this programme will be particularly helpful to individuals with an interest in transnational education and those seeking to develop skills to effectively work with international colleagues and faculty. Alongside the subject-specific knowledge gained, you will also develop professional skills such as communication, digital literacy, teaching and research, which could improve your career prospects and open access to new opportunities. For those students on the FHEA pathway, the award of both academic qualification (postgraduate certificate) and automatic professional recognition (FHEA) to successful participants offers an accelerated and significant career benefit for individuals seeking to develop their practice in higher education.



Welcome to the Department of Computer Science

Since it was established in 1983, our Department of Computer Science has been at the forefront of key developments in computer science and has built a strong international reputation for research in artificial intelligence and algorithms. The latest Research Excellence Framework 2021 rated us 5th in the UK for world leading (4*) research outputs, and 100% of research environment rated as world leading (4*) or internationally excellent (3*).

The Department of Computer Science at the University of Liverpool is proud of its internationally recognised high-quality taught provision and its extensive research portfolio. We were amongst the first to deliver wholly online taught programmes back in 2000. Ever since this landmark beginning, we have been pioneering state-of-the-art online education and providing an excellent learning experience for our students that both encourages and enables our students to achieve their full potential.

PROGRAMME AREAS

Computer Science

Artificial Intelligence

*Data Science and Artificial Intelligence
Cyber Security*

Big Data Analytics

Information Systems Management

COMPUTER SCIENCE

Equip yourself with the necessary technical knowhow to transition to a career in computer science with these conversion programmes.

Designed for professionals from a non-computing background, these programmes will provide a comprehensive insight into the modern computer science landscape, and augment this with selected specialist knowledge in artificial intelligence. The career prospects for our graduates have never been better, with over 90% of Liverpool's computer science graduates going onto well-paid graduate jobs.

The programme is accredited by the BCS, The Chartered Institute for IT, for the purposes of meeting the further learning academic requirement for registration as a Chartered IT Professional.

Programme at-a-glance

Qualification	Duration
Computer Science MSc	24 months
Computer Science PGDip	16 months
Computer Science PGCert	8 months
Study mode: online and part-time	

Start dates: Throughout the year. See our website for upcoming dates. The study duration of this programme is currently subject to change and final validation.

Entry requirements

Applicants should possess either:

- A degree in any subject equivalent to a UK Bachelor's degree of 2:2 or above; or
- At least two years' work experience, ideally of a technical nature, comparable with a Bachelor's degree

If you have limited exposure in numeracy or programming, you may need to consider further effort in these areas to maintain the standards of the programme, but are still encouraged to apply.

All applicants must have reached a minimum required standard of English language, and are required to provide evidence of this. Successful applicants from outside the UK must have an International English Language Testing System (IELTS) academic score of 6.5 overall or equivalent. If you don't have an IELTS or equivalent certificate, you can take our free online English test to assess your proficiency. Check our website for further details.

What will I study?

	MSc	PGDip	PGCert
Global Trends in Computer Science (15 credits)	*	*	*
Software Development in Practice (15 credits)	*	*	*
Databases and Information Systems (15 credits)	*	*	*
Networks and Web Technology (15 credits)	*	*	*
Choose two elective modules from (15 credits):	**	**	
Reasoning and Intelligent Systems*			
Machine Learning in Practice*			
Robotics*			
Data Visualisation and Warehousing			
Cloud Computing			
Security Risk Management			
Information Technology Leadership			
Strategic Technology Management			
Technology Innovation and Change Management			
Multi-Agent Systems (15 credits)	*	*	
Research Methods in Computer Science (15 credits)	*	*	
Computer Science Capstone Project (60 credits)	*		

*Note - One out of the two electives must be selected out of Reasoning and Intelligent Systems, Machine Learning in Practice and Robotics.

Where can this take me?

The skills gap in the technology industry continues to increase. By studying this conversion degree, you will acquire the necessary skills and knowledge to access careers across this field, including within the growing field of artificial intelligence. Job roles you may be eligible for following completion of the programme include software engineer, machine learning practitioner, big data analyst, network administrator, database manager, IT consultant, AI developer, research scientist and information strategy manager.

ARTIFICIAL INTELLIGENCE

Develop your skills in a rapidly growing sector of computer science with these specialist programmes.

The number of industries where artificial intelligence (AI) is utilised continues to grow, as does the demand for technical specialists who are familiar with the theory and practice of building intelligent systems. Our specialist artificial intelligence programmes will introduce you to the theory and practice of AI programming and development, and also explores relevant applications of the discipline across a range of industries in which you may choose to pursue a career after graduation.

The programme is accredited by the BCS, The Chartered Institute for IT, for the purposes of meeting the further learning academic requirement for registration as a Chartered IT Professional.

Programme at-a-glance

Qualification	Duration
Artificial Intelligence MSc	24 months
Artificial Intelligence PGDip	16 months
Artificial Intelligence PGCert	8 months

Study mode: online and part-time

Start dates: Throughout the year. See our website for upcoming dates. The study duration of this programme is currently subject to change and final validation.

Entry requirements

Applicants should possess either:

- A degree in computer science or a closely related subject, equivalent to a 2:2 UK bachelor's degree, coupled with two years' relevant IT professional experience; or
- Professional work experience in IT or a related field and/or other prior qualifications, which will be considered on a case-by-case basis.

All applicants must have reached a minimum required standard of English language and are required to provide evidence of this. Successful applicants from outside the UK must have an International English Language Testing System (IELTS) score of 6.5 overall or equivalent. If you don't have an IELTS or equivalent certificate, you can take our free online English test to assess your proficiency. Check our website for further details.

What will I study?

	MSc	PGDip	PGCert
Global Trends in Computer Science (15 credits)	*	*	*
Machine Learning in Practice (15 credits)	*	*	*
Multi-Agent Systems (15 credits)	*	*	*
Robotics (15 credits)	*	*	*
Choose one elective module from (15 credits): Deep Learning Data Visualisation and Warehousing Cloud Computing Security Risk Management Information Technology Leadership Strategic Technology Management Technology Innovation and Change Management	*	*	
Reasoning and Intelligent Systems (15 credits)	*	*	
Natural Language Processing and Understanding (15 credits)	*	*	
Research Methods in Computer Science (15 credits)	*	*	
Computer Science Capstone Project (60 credits)	*		

Where can this take me?

The demand for professionals with knowledge of AI far outstrips supply, and our graduates will be able to succeed in demanding roles within a range of sectors, including interdisciplinary opportunities by coupling advanced knowledge of AI with the strong foundation in computer science from their first degree. Potential job titles include data scientist, AI developer, AI consultant, machine learning engineer, research scientist and information strategy manager.

DATA SCIENCE AND

ARTIFICIAL INTELLIGENCE

Pursue a career in this high-demand sector while gaining a deep and systematic understanding into the domains of data science and AI.

These conversion programmes are designed for students from a non-computer science background, allowing you to gain a generalist masters in this specialist subject. The fields of data science and artificial intelligence continue to grow in importance to businesses from all sectors, and this programme benefits from the University of Liverpool's cutting-edge research in this discipline.

The programme is accredited by the BCS, The Chartered Institute for IT, for the purposes of meeting the further learning academic requirement for registration as a Chartered IT Professional.

Programme at-a-glance

Qualification	Duration
Data Science and Artificial Intelligence MSc	24 months
Data Science and Artificial Intelligence PGDip	16 months
Data Science and Artificial Intelligence PGCert	8 months

Study mode: online and part-time

Start dates: Throughout the year. See our website for upcoming dates. The study duration of this programme is currently subject to change and final validation.

Entry requirements

Applicants should possess either:

- A degree in any subject equivalent to a UK Bachelor's degree of 2:2 or above; or
- At least two years' work experience, ideally of a technical nature, comparable with a Bachelor's degree

If you have limited exposure in numeracy or programming, you may need to consider further effort in these areas to maintain the standards of the programme, but are still encouraged to apply.

All applicants must have reached a minimum required standard of English language, and are required to provide evidence of this. Successful applicants from outside the UK must have an International English Language Testing System (IELTS) academic score of 6.5 overall or equivalent. If you don't have an IELTS or equivalent certificate, you can take our free online English test to assess your proficiency. Check our website for further details.

What will I study?

	MSc	PGDip	PGCert
Global Trends in Computer Science (15 credits)	*	*	*
Mathematics and Statistics for Data Science (15 credits)	*	*	*
Software Development in Practice (15 credits)	*	*	*
Databases and Information Systems (15 credits)	*	*	*
Choose three elective module from (15 credits):	***	***	
Reasoning and Intelligent Systems*			
Machine Learning in Practice*			
Multi-Agent Systems*			
Robotics*			
Deep Learning*			
Natural language Processing and Understanding*			
Data Visualisation and Warehousing			
Cloud Computing			
Networks and Web Technology			
Research Methods in Computer Science (15 credits)	*	*	
Computer Science Capstone Project (60 credits)	*		

*Note - Two out of the three electives must be selected out of Reasoning and Intelligent Systems, Machine Learning in Practice, Multi-Agent Systems, Robotics, Deep Learning and Natural Language Processing and Understanding.

Where can this take me?

Successful completion of your programme will allow you to take up careers in the growing area of data science and artificial intelligence, or in many other computer science settings, including interdisciplinary roles related to your undergraduate degree. The skills you develop will be of use in a wide range of industries including healthcare, government agencies and technology. Potential job titles are varied, and include examples such as data analyst, data scientist, database manager, machine learning practitioner and IT consultant.

CYBER SECURITY

Gain a comprehensive and critical understanding of the theory and techniques of cyber security and how to apply them to real-world situations.

These specialist programmes will build your ability to research, design, implement and deploy creative cyber security solutions. Graduates will be equipped with all the tools needed to take up a rewarding career in this fast-growing sector which is currently suffering from a significant skills shortage.

The programme is accredited by the BCS, The Chartered Institute for IT, for the purposes of meeting the further learning academic requirement for registration as a Chartered IT Professional.

Programme at-a-glance

Qualification	Duration
Cyber Security MSc	24 months
Cyber Security PGDip	16 months
Cyber Security PGCert	8 months

Study mode: online and part-time

Start dates: Throughout the year. See our website for upcoming dates. The study duration of this programme is currently subject to change and final validation.

Entry requirements

Applicants should possess either:

- A degree in any subject equivalent to a UK Bachelor's degree of 2:2 or above; or
- At least two years' work experience, ideally of a technical nature, comparable with a Bachelor's degree

If you have limited exposure in numeracy or programming, you may need to consider further effort in these areas to maintain the standards of the programme, but are still encouraged to apply.

All applicants must have reached a minimum required standard of English language, and are required to provide evidence of this. Successful applicants from outside the UK must have an International English Language Testing System (IELTS) academic score of 6.5 overall or equivalent. If you don't have an IELTS or equivalent certificate, you can take our free online English test to assess your proficiency. Check our website for further details.

What will I study?

	MSc	PGDip	PGCert
Global Trends in Computer Science (15 credits)	*	*	*
Security Engineering and Compliance (15 credits)	*	*	*
Cyber Crime Prevention and Protection (15 credits)	*	*	*
Networks and Web Technology (15 credits)	*	*	*
Cyber Forensics (15 credits)	*	*	
Security Risk Management (15 credits)	*	*	
Choose one elective module from (15 credits):	*	*	
Applied Cryptography			
Multi-Agent Systems			
Software Development in Practice			
Databases and Information Systems			
Research Methods in Computer Science (15 credits)	*	*	
Computer Science Capstone Project (60 credits)	*		

Where can this take me?

As the level of internet-facilitated working has grown and continues to grow, robust cyber security measures are increasingly necessary for businesses of all sizes and from all sectors. Throughout your programme, you will develop skills with an immediate practical application in the workplace. It will provide a solid foundation for your further career development towards senior technical and managerial positions in the field of cyber security.

BIG DATA ANALYTICS

Earn a specialist qualification in big data analytics and take your career to the next level in an exciting area of computer science.

This specialist master's programme is designed for computer science professional looking to advance their career within the big data revolution that is currently transforming our lives. The programme is designed to give you a comprehensive understanding of both the technology that supports big data analytics and the practical application of this technology in the context of business information and real-world problems.

The programme is accredited by the BCS, The Chartered Institute for IT, for the purposes of meeting the further learning academic requirement for registration as a Chartered IT Professional.

Programme at-a-glance

Qualification	Duration
Big Data Analytics MSc	24 months
Big Data Analytics PGDip	16 months
Big Data Analytics PGCert	8 months

Study mode: online and part-time

Start dates: Throughout the year. See our website for upcoming dates. The study duration of this programme is currently subject to change and final validation.

Entry requirements

Applicants should possess either:

- A first degree in Computer Science, or closely related subject, equivalent to a UK Bachelor's degree (2:2 or above), coupled with two years relevant professional IT experience; or
- Professional work experience in IT or a related field and/or other prior qualifications, which will be considered on a case-by-case basis.

All applicants must have reached a minimum required standard of English language and are required to provide evidence of this. Successful applicants from outside the UK must have an International English Language Testing System (IELTS) score of 6.5 overall or equivalent. If you don't have an IELTS or equivalent certificate, you can take our free online English test to assess your proficiency. Check our website for further details.

What will I study?

	MSc	PGDip	PGCert
Global Trends in Computer Science (15 credits)	*	*	*
Data Visualisation and Warehousing (15 credits)	*	*	*
Machine Learning in Practice (15 credits)	*	*	*
Cloud Computing (15 credits)	*	*	*
Security Engineering and Compliance (15 credits)	*	*	
Deep Learning (15 credits)	*	*	
Choose one elective module from (15 credits):	*	*	
Applied Cryptography			
Cyber Forensics			
Cybercrime Prevention and Protection			
Information Technology Leadership			
Multi-Agent Systems			
Natural Language Processing and Understanding			
Reasoning and Intelligent Systems			
Robotics			
Security Risk Management			
Strategic Technology Management			
Technology, Innovation and Change Management			
Research Methods in Computer Science (15 credits)	*	*	
Computer Science Capstone Project (60 credits)	*		

Where can this take me?

With an expected skills gap shortage in many industries, gaining a specialist qualification in big data analytics will help you to succeed in this constantly evolving field of computer science. Potential job titles include data scientist, big data consultant, machine learning engineer and research scientist.

INFORMATION SYSTEMS

MANAGEMENT

Take the next step towards management in the IT industry with this information systems management course.

This specialist master's programme is designed to equip you with the management and leadership skills necessary to succeed in management roles in the IT industry. Graduates will gain the know-how and confidence to drive change and innovation in the industry after learning from an institution renowned for cutting-edge research in computer science.

The programme is accredited by the BCS, The Chartered Institute for IT, for the purposes of meeting the further learning academic requirement for registration as a Chartered IT Professional.

Programme at-a-glance

Qualification

Information Systems Management MSc

Information Systems Management PGDip

Information Systems Management PGCert

Duration

24 months

16 months

8 months

Study mode: online and part-time

Start dates: Throughout the year. See our website for upcoming dates. The study duration of this programme is currently subject to change and final validation.

Entry requirements

Applicants should possess either:

- A degree in any subject equivalent to a UK Bachelor's degree of 2:2 or above; or
- At least two years' work experience, ideally of a technical nature, comparable with a Bachelor's degree

If you have limited exposure in numeracy or programming, you may need to consider further effort in these areas to maintain the standards of the programme, but are still encouraged to apply.

All applicants must have reached a minimum required standard of English language, and are required to provide evidence of this. Successful applicants from outside the UK must have an International English Language Testing System (IELTS) academic score of 6.5 overall or equivalent. If you don't have an IELTS or equivalent certificate, you can take our free online English test to assess your proficiency. Check our website for further details.

What will I study?

	MSc	PGDip	PGCert
Global Trends in Computer Science (15 credits)	*	*	*
Information Technology Leadership (15 credits)	*	*	*
Security Risk Management (15 credits)	*	*	*
Databases and Information Systems	*	*	*
Strategic Technology Management (15 credits)	*	*	
Technology, Innovation and Change Management (15 credits)	*	*	
Choose one elective modules from (15 credits):	*	*	
Cybercrime Prevention and Protection			
Data Visualisation and Warehousing			
Multi-Agent Systems			
Security Engineering and Compliance			
Networks & Web Technology			
Software Development in Practice			
Research Methods in Computer Science (15 credits)	*	*	
Computer Science Capstone Project (60 credits)	*		

Where can this take me?

Earning a qualification in Information Systems Management will progress you into management in the IT industry, in roles that include the management of software development teams, the management of teams responsible for IT infrastructure and the management of teams responsible for IT products and services.



Students at all levels benefit from immersion in a world-leading research-intensive environment. Our philosophy is to provide a research-connected student experience combining active learning and authentic assessment. On completion of your studies you will graduate with a master's degree in psychology from a prestigious Russell Group university.

Welcome to the Department of Psychology

The Department of Psychology at the University of Liverpool is one of the UK's oldest academic psychology departments, having been established in 1947. We are known for our world-class research, which is focused on improving the health, wellbeing, and lives of societies across the globe. Today we are one of the UK's leading psychology departments.

PROGRAMME AREAS

Psychology

Mental Health Psychology

Organisational and Business Psychology

PSYCHOLOGY

Expand your mind and career prospects by gaining a British Psychological Society (BPS) accredited master's degree with our online Psychology (Conversion) MSc.

This programme offers an opportunity for students from other disciplines to convert their existing qualifications and learning to an award that meets the requirements for Graduate Basis of Chartership with the British Psychological Society (GBC). GBC is essential for students' development as psychologists.

Our qualifications are designed to guide you in the construction of knowledge of the central features within the discipline of psychology, which will enable you to put principles into effect in a variety of settings including research, practice and the interface of applied research. The experience and skills developed will also be appreciated by employers in a wide range of professions outside of the field of psychology.

Programme at-a-glance

Qualification	Duration
Psychology MSc	24 months
Psychology PGDip	16 months
Psychology PGCert	8 months

Study mode: online and part-time

Start dates: Throughout the year. See our website for upcoming dates. The study duration of this programme is currently subject to change and final validation.

Entry requirements

Applicants should possess either:

- A minimum of a 2:1 class degree in any subject including psychology equivalent to a UK bachelor's degree; or
- A minimum of a 2:2 class degree in any subject including psychology equivalent to a UK bachelor's degree AND have gained at least two years of relevant professional experience.

Non-psychology applicants will normally require a GCSE Grade 4 (grade C) or GCE O Level pass in Mathematics and English, or an equivalent qualification.

All applicants from outside the UK must provide evidence that they have an English language ability equivalent to an IELTS (academic) score of 6.5 (overall) and 7.0 (reading and writing). If you don't have an IELTS or equivalent certificate, you can take our free online English test to assess your proficiency. Check our website for further details.

What will I study?

	MSc	PGDip	PGCert
Mind, Brain and Behaviour (15 credits)	*	*	*
Social Psychology (15 credits)	*	*	*
Data Analysis for Psychology (15 credits)	*	*	*
Personality, Individual Differences and Intelligence (15 credits)	*	*	*
Cross Cultural Issues in Lifespan Development (15 credits)	*	*	
Psychology of Learning (15 credits)	*	*	
Cognitive Psychology (15 credits)	*	*	
Psychobiology (15 credits)	*	*	
Dissertation (60 credits)	*		

Why Liverpool?

Impress with a prestigious qualification. One of the only online Psychology MSc programmes offered by a Russell Group university.

Learn from active research leaders. Our philosophy is to provide a research-connected student experience combining active learning and authentic assessment. You will be taught by some of the world's leading academic experts who are passionate about their research activity.

Take part in a collaborative and active learning approach. Exchange ideas and experiences via discussion forums with your international peers which facilitates interaction, motivation and learning, through promoting constructivist, critical and higher-order thinking.

Immerse yourself in action-based learning. Your study activities have been designed to actively engage you in solving real world problems within their context. This will enable you to integrate new knowledge into your working and social environment.

Prepare for your professional career. Our curriculum content and teaching have been developed with a strong focus on your future employment.

Where can this take me?

By successfully completing this programme, you will meet the requirements for Graduate Basis of Chartership with the British Psychological Society (GBC). This is the first step towards becoming a Chartered Psychologist in the United Kingdom (UK).

With GBC, students are eligible to be admitted to train in the domains of Clinical or Clinical Neuropsychology, Counselling, Educational Child Psychology, Forensic Psychology, Sports and Exercise Psychology or Occupational Psychology.

The scientific aspects of the course, including the application of a reasoned approach, problem solving and manipulation of data, provide useful tools for careers in healthcare, law enforcement, finance, IT and research. While the understanding about human behaviour and motivation, ability to critically analyse a problem, formulate a considered response, create an argument and generate new ideas, lend themselves well to careers in the creative industries, the legal sector, government administration and education.

MENTAL HEALTH PSYCHOLOGY

We will provide you with key knowledge of mental health psychology and the ability to define the most appropriate psychological approaches for mental health conditions.

Our programme is specifically designed for you understand the fundamentals of psychology whilst building upon your knowledge and skills in the area of Mental Health. This MSc will help your career journey in the mental health sector. You will develop the ability to identify and evaluate patterns in behaviour and psychological functioning, whilst developing your own independent piece of research into an area of mental health psychology.

Programme at-a-glance

Qualification	Duration
Mental Health Psychology MSc	24 months
Mental Health Psychology PGDip	16 months

Study mode: online and part-time

Start dates: Throughout the year. See our website for upcoming dates. The study duration of this programme is currently subject to change and final validation.

Entry requirements

All applications will be considered on a case-by-case basis. If you want to discuss your previous qualifications and experience before applying, please contact us now via our website.

Applicants should possess either:

- A minimum of a 2:2 class degree in any subject, equivalent to a UK bachelor's degree; or
- Professional work experience in a related field and/or other prior qualifications will be considered on a case-by-case basis.

Non-psychology applicants will normally require a GCSE Grade 4 (grade C) or GCE O Level pass in Mathematics and English, or an equivalent qualification.

All applicants must provide evidence that they have an English language ability equivalent to an IELTS (academic) score of 6.5 (overall) and 7.0 (reading and writing). If you don't have an IELTS or equivalent certificate, you can take our free online English test to assess your proficiency. Check our website for further details.

What will I study?

	MSc	PGDip
Mind, Brain, and Behaviour (15 credits)	*	*
Data Analysis for Psychology (15 credits)	*	*
Social Psychology (15 credits)	*	*
Personality, Individual Differences, and Intelligence (15 credits)	*	*
Approaches to Mental Health Psychology (15 credits)	*	*
Psychotherapeutic Interventions (15 credits)	*	*
Psychological Appraisal and Treatment (15 credits)	*	*
Cognitive Behavioural Therapy (15 credits)	*	*
Dissertation (60 credits)	*	

Why Liverpool?

Learn from active research leaders. Our philosophy is to provide a research-connected student experience combining active learning and authentic assessment. You will be taught by some of the world's leading academic experts who are passionate about their research activity particularly within this specialised field.

Take part in a collaborative and active learning approach. Exchange ideas and experiences via discussion forums with your international peers which facilitates interaction, motivation and learning, through promoting constructivist, critical and higher-order thinking.

Immerse yourself in action-based learning. Your study activities have been designed to actively engage you in mental health conditions within their context. This will enable you to integrate new knowledge into your working environment.

Prepare for your professional career. Our curriculum content and teaching have been developed with a strong focus on your future employment within the mental health sector.

Where can this take me?

On completion of the programme, you will have a foundation in the science of Psychology and will have developed a working knowledge of mental health to utilise in a health environment.

The scientific aspects of the course, including the application of a reasoned approach, problem solving and manipulation of data, provides you with useful tools for careers in healthcare, law enforcement, finance, IT and research. While the understanding about human behaviour, mental health conditions and motivation, gives you the ability to critically analyse a problem, formulate a considered response, create an argument and generate new ideas. These key skills lend themselves well to careers in the creative industries, the legal sector, government administration and education.

ORGANISATIONAL AND BUSINESS

PSYCHOLOGY

We will provide you with key knowledge of psychological theories and principles to apply to a wide array of environments for organisational and staff success.

Our programme is specifically designed for you understand the fundamentals of psychology whilst building upon your knowledge of disciplines within organisational and business psychology. You will become empowered to create change in workplace settings to benefit employer and employees alike, by utilising a wide range of methods and techniques on completion of the course.

Programme at-a-glance

Qualification	Duration
Organisational and Business Psychology MSc	24 months
Organisational and Business Psychology PGDip	16 months

Study mode: online and part-time

Start dates: Throughout the year. See our website for upcoming dates. The study duration of this programme is currently subject to change and final validation.

Entry requirements

All applications will be considered on a case-by-case basis. If you want to discuss your previous qualifications and experience before applying, please contact us now via our website.

Applicants should possess either:

- A minimum of a 2:2 class degree in any subject, equivalent to a UK bachelor's degree; or
- Professional work experience in a related field and/or other prior qualifications will be considered on a case-by-case basis.

Non-psychology applicants will normally require a GCSE Grade 4 (grade C) or GCE O Level pass in Mathematics and English, or an equivalent qualification.

All applicants must provide evidence that they have an English language ability equivalent to an IELTS (academic) score of 6.5 (overall) and 7.0 (reading and writing). If you don't have an IELTS or equivalent certificate, you can take our free online English test to assess your proficiency. Check our website for further details.

What will I study?

	MSc	PGDip
Mind, Brain, and Behaviour (15 credits)	*	*
Data Analysis for Psychology (15 credits)	*	*
Social Psychology (15 credits)	*	*
Personality, Individual Differences, and Intelligence (15 credits)	*	*
Evidence Based Coaching (15 credits)	*	*
Inspiring others; the Psychology of Leadership (15 credits)	*	*
Global Talent Management (15 credits)	*	*
Organisational Development and Change (15 credits)	*	*
Dissertation (60 credits)	*	

Why Liverpool?

Learn from active research leaders. Our philosophy is to provide a research-connected student experience combining active learning and authentic assessment. You will be taught by some of the world's leading academic experts who are passionate about their research activity particularly within this specialised field.

Take part in a collaborative and active learning approach. Exchange ideas and experiences via discussion forums with your international peers which facilitates interaction, motivation and learning, through promoting constructivist, critical and higher-order thinking.

Immerse yourself in action-based learning. Your study activities have been designed to actively engage you in real world organisational issues within their context. This will enable you to integrate new knowledge into your working environment.

Prepare for your professional career. Our curriculum content and teaching have been developed with a strong focus on your future employment within organisational psychology.

Where can this take me?

After completion of this MSc, this course will help those entering or already within the field of HR to specialise further into organisational psychology roles for numerous sectors.

The course will also develop your skills to apply new research methods and practices such as interview techniques and psychometric testing into a real world environment. Along with an understanding of how to coach individuals to achieve their career goals ideal for those looking to begin a career in occupational consultancy.

A young girl with a joyful expression is washing her hands at a public water tap. She is wearing a red and black patterned top. The water is splashing around her hands. The background is a bright, slightly blurred outdoor setting.

Welcome to the Department of Public Health, Policy and Systems

Our department is one of the largest of its kind in the UK and has a world-leading status for excellence in research and education. Our activities are underpinned by the social model of health and its application to health inequalities, and to health and social care systems. We inspire people to learn and achieve – and do things that they never thought possible.

PROGRAMME AREAS

Master of Public Health (Online)

Master of Public Health (Online) - Global Health

Master of Public Health (Online) - Global Mental Health

Master of Public Health (Online) - Health Economics and Policy

We have delivered world-class MPH programmes for more than thirty years. Our students benefit from the latest findings from our global research leaders. We draw on local and global experience and expertise to provide a bespoke education and training for public health practice.

MASTER OF PUBLIC HEALTH (ONLINE)

This programme delivers the relevant knowledge and skills required to address public health concerns globally.

You will be provided with a solid foundation in public health, including health promotion in a global setting, health inequalities, management and leadership, and the research methodologies underpinning public health.

You can also elect to study specialist modules that will help you to develop specific expertise in public health, such as managing crises and disasters, programme and policy challenges in low-income countries, and health economics.

Programme at-a-glance

Qualification	Duration
Master of Public Health (MPH)	30 months
Postgraduate Diploma (PG Diploma)	20 months
Postgraduate Certificate (PG Certificate)	10 months

Study mode: online and part-time

Start dates: Throughout the year. See our website for upcoming dates.

Entry requirements

As an applicant you should possess:

- A master's or bachelor's in medicine or a non-health related degree at 2:2 or above, equivalent to a UK degree

We also welcome applicants without a degree, who will be considered on the basis of holding relevant work experience.

In addition to the above, applicants require a GCSE Grade 4, Grade C, or GCE O Level pass in Mathematics and English, or an equivalent qualification.

All applicants will need to provide a personal statement detailing why they wish to undertake the programme, and how their work experience is relevant to the programme.

All applicants must provide evidence that they have an English language ability equivalent to an IELTS (academic) score of 6.5 (overall) and 7.0 (reading and writing).

What will I study?

	MPH	PGDip	PGCert
Practising and Promoting Public Health in a Global Context (15 credits)	*	*	*
Generating and Evaluating Public Health Evidence (20 credits)	*	*	*
Integrated Research in Public Health: Epidemiology and Qualitative Methods (20 credits)	*	*	*
Leading and Managing Health Systems (10 credits)	*	*	*
Monitoring and Evaluation of Systems and Programmes (10 credits)	*	*	
Two optional modules from (2 x10 credits):			
Health Protection: Preventing and Managing Communicable Diseases			
Managing Crises and Disasters	**	**	
Programme and Policy Challenges in Low Income Countries			
Health, Economics and Governance			
Global Mental Health: Contemporary issues			
Global Mental Health Practice & Research			
Health Inequalities: Integrating Public Health Practice (10 credits)	*	*	
One core module from (1x15 credits):			
Applied Epidemiological Research for Public Health; or Applied Qualitative Research for Public Health	*	*	
Health Inequalities: Integrating Public Health Practice (10 credits)	*	*	
Dissertation (60 credits)	*		

Where can this take me?

If you are working in any area of public health and looking to progress your career, a master's degree is essential. Upon completion of your programme, you will have the knowledge and skills to put public health principles into effect in a variety of settings – including research, practice, and policy. Your expertise could open senior roles in public health research and practice within a range of sectors, such as health organisations, governmental organisations, charities, and non-governmental organisations.

MASTER OF PUBLIC HEALTH (ONLINE)

GLOBAL HEALTH

Gain the specialist knowledge to tackle global health challenges with this insightful programme.

This master's degree offers a solid foundation in public health policies, programmes, and projects. Modules in managing crises and disaster, environmental hazards, and preventing and managing communicable diseases will help you to develop global health expertise.

On completion, you will be able to critically appraise health and social systems, and have a strong understanding of how global issues affect policies and systems in practice.

Programme at-a-glance

Qualification

Master of Public Health (MPH)

Postgraduate Diploma (PG Diploma)

Study mode: online and part-time

Start dates: Throughout the year. See our website for upcoming dates.

Duration

30 months

20 months

Entry requirements

As an applicant you should possess:

- A master's or bachelor's in medicine or a non-health related degree at 2:2 or above, equivalent to a UK degree

We also welcome applicants without a degree, who will be considered on the basis of holding relevant work experience.

In addition to the above, applicants require a GCSE Grade 4, Grade C, or GCE O Level pass in Mathematics and English, or an equivalent qualification.

All applicants will need to provide a personal statement detailing why they wish to undertake the programme, and how their work experience is relevant to the programme.

All applicants must provide evidence that they have an English language ability equivalent to an IELTS (academic) score of 6.5 (overall) and 7.0 (reading and writing).

If you do not currently meet our entry requirements, we offer a 15-credit standalone module, Practising and Promoting Public Health in a Global Context, that can provide a gateway onto the Master of Public Health (Online) - Global Health if completed successfully.

What will I study?

	MPH	PGDip
Practising and Promoting Public Health in a Global Context (15 credits)	*	*
Generating and Evaluating Public Health Evidence (20 credits)	*	*
Integrated Research in Public Health: Epidemiology and Qualitative Methods (20 credits)	*	*
Leading and Managing Health Systems (10 credits)	*	*
Monitoring and Evaluation of Systems and Programmes (10 credits)	*	*
Health protection: preventing and managing communicable diseases (10 credits)	*	*
Managing crises and disaster (10 credits)	*	*
Choose from one option: Applied epidemiological research for public health (15 credits)	*	*
Applied qualitative research for public health (15 credits)		
Health Inequalities: Integrating Public Health Practice (10 credits)	*	*
Dissertation (60 credits)	*	

Where can this take me?

If you are looking to advance your global healthcare career, a master's degree is essential. Upon completion of your programme, you will have expert knowledge of the concepts of health and disease, ideal for leadership or managerial positions in global health organisations. You could also access roles across a range of sectors, such as health organisations, governmental organisations, charities and non-governmental organisations (NGOs).

MASTER OF PUBLIC HEALTH (ONLINE)

GLOBAL MENTAL HEALTH

Deepen your knowledge of the key issues impacting global mental health by choosing this specialist Master of Public Health (MPH).

This programme offers a strong foundation in public health research and practice, preparing you to make a meaningful impact in public, non-governmental, and international settings.

The programme has a specialist focus on the importance of mental health in the achievement of the UN's Sustainable Development Goals. It also covers the challenges of applying psychosocial interventions to public mental health challenges in a range of diverse settings with limited resources.

Programme at-a-glance

Qualification

Master of Public Health (MPH)

Postgraduate Diploma (PG Diploma)

Study mode: online and part-time

Start dates: Throughout the year. See our website for upcoming dates.

Duration

30 months

20 months

Entry requirements

As an applicant you should possess:

- A master's or bachelor's in medicine or a non-health related degree at 2:2 or above, equivalent to a UK degree

We also welcome applicants without a degree, who will be considered on the basis of holding relevant work experience.

In addition to the above, applicants require a GCSE Grade 4, Grade C, or GCE O Level pass in Mathematics and English, or an equivalent qualification.

All applicants will need to provide a personal statement detailing why they wish to undertake the programme, and how their work experience is relevant to the programme.

All applicants must provide evidence that they have an English language ability equivalent to an IELTS (academic) score of 6.5 (overall) and 7.0 (reading and writing).

What will I study?

	MPH	PGDip
Practising and Promoting Public Health in a Global Context (15 credits)	*	*
Generating and Evaluating Public Health Evidence (20 credits)	*	*
Integrated Research in Public Health: Epidemiology and Qualitative Methods (20 credits)	*	*
Leading and Managing Health Systems (10 credits)	*	*
Monitoring and Evaluation of Systems and Programmes (10 credits)	*	*
Global Mental Health: Contemporary Issues (10 credits)	*	*
Global Mental Health Practice and Research (10 credits)	*	*
Choose from one option: Applied epidemiological research for public health (15 credits)	*	*
Applied qualitative research for public health (15 credits)		
Health Inequalities: Integrating Public Health Practice (10 credits)	*	*
Dissertation (60 credits)	*	

Where can this take me?

Graduates of the MPH with a specialisation in Global Mental Health will be well-prepared to pursue careers in mental health policy and planning, and epidemiological and health services research – as well as advisory and advocacy roles within governments, international organisations, and non-governmental bodies.

MASTER OF PUBLIC HEALTH (ONLINE)

HEALTH ECONOMICS AND POLICY

Gain the knowledge and skills required to address worldwide policy challenges and health inequalities.

This programme offers a solid foundation in health economics, including programme and policy challenges in low-income countries (LIC), as well as health economics and governance, and health inequalities from an economic perspective. These specialist modules will help you to develop expertise in public health economics.

On completion, you will be able to evaluate a range of public health methodologies and approaches to establish the most appropriate application from an ethical, social, and economic standpoint.

Programme at-a-glance

Qualification	Duration
Master of Public Health (MPH)	30 months
Postgraduate Diploma (PG Diploma)	20 months
Study mode: online and part-time	
Start dates: Throughout the year. See our website for upcoming dates.	

Entry requirements

As an applicant you should possess:

- A master's or bachelor's in medicine or a non-health related degree at 2:2 or above, equivalent to a UK degree

We also welcome applicants without a degree, who will be considered on the basis of holding relevant work experience.

In addition to the above, applicants require a GCSE Grade 4, Grade C, or GCE O Level pass in Mathematics and English, or an equivalent qualification.

All applicants will need to provide a personal statement detailing why they wish to undertake the programme, and how their work experience is relevant to the programme.

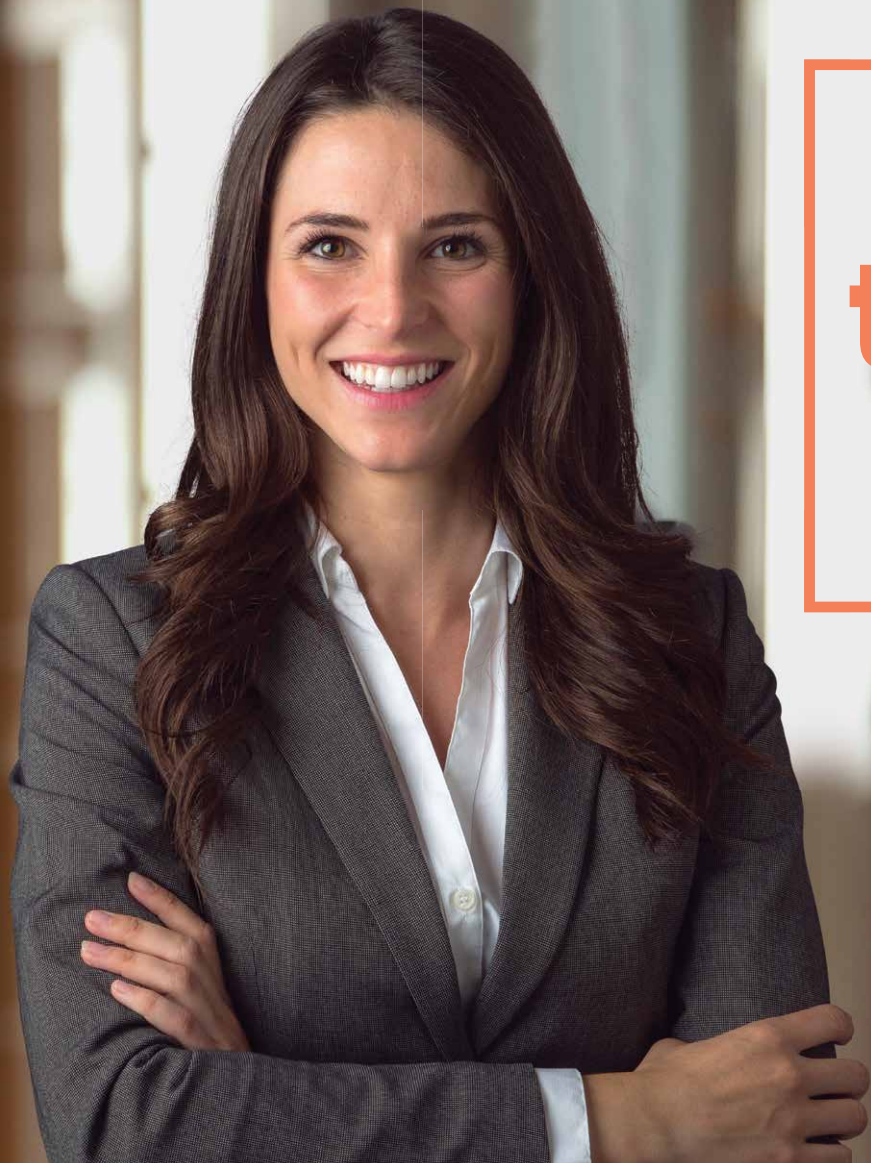
All applicants must provide evidence that they have an English language ability equivalent to an IELTS (academic) score of 6.5 (overall) and 7.0 (reading and writing).

What will I study?

	MPH	PGDip
Practising and Promoting Public Health in a Global Context (15 credits)	*	*
Generating and Evaluating Public Health Evidence (20 credits)	*	*
Integrated Research in Public Health: Epidemiology and Qualitative Methods (20 credits)	*	*
Leading and Managing Health Systems (10 credits)	*	*
Monitoring and Evaluation of Systems and Programmes (10 credits)	*	*
Programme and Policy Challenges in Low Income Countries (10 credits)	*	*
Health, Economics and Governance (10 credits)	*	*
Choose from one option: Applied epidemiological research for public health (15 credits)	*	*
Applied qualitative research for public health (15 credits)		
Health Inequalities: Integrating Public Health Practice (10 credits)	*	*
Dissertation (60 credits)	*	

Where can this take me?

If you are looking to progress your public health and economics career, a master's degree is essential. Upon completion of your programme, you will have the knowledge and skills to put economic health principles and policy best practices into effect in a variety of settings – including research, practice, and policy. This could also open up senior positions across high, middle, and low-income countries in a range of sectors, such as health organisations, governmental organisations, charities, and NGOs.



It's because our research informs our teaching that we provide a rigorous intellectual and practical introduction to the professional workplace, as a basis for pursuing legal, academic or other fulfilling careers.

Welcome to the Liverpool Law School

Established in 1892, the Liverpool Law School is one of the oldest law departments in the UK. We are committed to contributing, through the excellence of our research and policy work, to critical exploration of the role of law in promoting, or inhibiting, social justice. We strive for social relevance and to influence public debate and policy at the local, national, European, and international levels.

PROGRAMME AREAS

International Business Law

INTERNATIONAL BUSINESS LAW

International Business Law is an ideal programme for both law and non-law graduates looking to develop their knowledge, skills and understanding, advance their careers and thrive within the legal profession, business and the wider financial services sector.

The programme has been designed to include both legal and commercial perspectives and provides a thorough grounding in the legal skills and knowledge required in today's global business environment. Students will learn in a collaborative online environment, gaining a real-world and international perspective in interactions with peers from diverse cultural backgrounds and experiences.

Programme at-a-glance

Qualification

International Business Law LLM

International Business Law PGDip

International Business Law PGCert

International Business Law PGAward

Duration

24 months

16 months

8 months

4 months

Study mode: online and part-time

Start dates: Throughout the year. See our website for upcoming dates. The study duration of this programme is currently subject to change and final validation.

Entry requirements

Applicants should possess either:

- Preferably a 2:2 class degree in a relevant subject, equivalent to a UK bachelor's degree; or
- Professional work experience in a related field and/or other prior qualifications will be considered on a case-by-case basis.

All applicants must have reached a minimum required standard of English language and are required to provide evidence of this. Successful applicants from outside the UK must have an International English Language Testing System (IELTS) score of 6.5 overall or equivalent (with a minimum of 6.0 in all components). If you don't have an IELTS or equivalent certificate, you can take our free online English test to assess your proficiency. Check our website for further details.

What will I study?

	LLM	PGDip	PGCert	PGAward
International Business Law (15 credits)	*	*	*	*
Critical Legal Thinking in International Business Law (15 credits)	*	*	*	*
International Trade Law (15 credits)	*	*	*	
EU Trade Law (15 credits)	*	*		
Conflicts of Laws in Business and Commerce (15 credits)	*	*	*	
Competition Law (15 credits)	*	*		
2 elective modules from (2x15 credits): • Corporate Governance • Aspects of Banking Law • Intellectual Property Law • International Sale of Goods • International Financial Crime	**	**		
Research Dissertation (60 credits)	*			

Why Liverpool?

Immerse yourself in an international virtual classroom setting. Our Virtual Learning Environment (VLE) provides a global platform for students to discover and debate the legal context that guides worldwide commercial activity.

Develop a thorough grounding in the legal skills and knowledge required in today's global business environment. Students from varied academic backgrounds (including those working in the financial services sector and business) can gain a comprehensive understanding of techniques applicable to their own research and advanced scholarship so they acquire the legal knowledge, skills, and training to work efficiently in the legal and wider business sectors

Learn from leading experts in a culture of research excellence. The University of Liverpool Law School is one of the oldest law departments in the UK. Join a school that is committed to contributing, through the excellence of our research and policy work, to the critical exploration of the role of law in promoting, or inhibiting, social justice.

Where can this take me?

The programme is designed to enhance the existing knowledge base and understanding of candidates with an undergraduate degree from diverse legal backgrounds, providing a stepping-stone for career development within the legal profession, business environment or the wider financial services sector.

For non-law graduates, or those whose first law degree is from a civil law jurisdiction, the programme will provide a good foundation of the Common Law legal system, with specific focus on its commercial environment

For non-law graduates but who have experience working in the business or financial services sector, the programme will provide a solid and first exposure to the operation of the legal environment governing commercial operations and decision making.

The programme will also provide a solid base for those working in government or non-government agencies.

More generally, students will graduate with enhanced skills and knowledge that enable them to be highly effective professionals, managers and leaders who are able to respond to emerging and ongoing policy and legal challenges in a strategic and innovative way within their organisations.



Through our culturally diverse student body, international connections and online programmes, we are able to offer a truly international learning experience which helps our students become global citizens. Imbued with Liverpool's energy, our graduates use their ingenuity to make a difference to business, organisations and society across the globe.

Welcome to the Management School

The Management School is part of the historic University of Liverpool, established in 1881 and one of the founding Russell Group members. We have offered wholly online management degrees since 2001 and part of an elite group of worldwide institutes to be triple-accredited, holding AACSB, EQUIS and AMBA. Our vision is to be a globally connected Management School, with our transformative research and teaching, placing us at the forefront of influential knowledge leadership.

PROGRAMME AREAS

Master of Business Administration (MBA)

Digital Marketing

International Human Resource Management

Management

Finance and Investment Management

Project Management

MASTER OF BUSINESS

ADMINISTRATION (MBA)

Aimed at professionals with existing management experience, this programme is designed to develop the knowledge, skills and values helping you succeed in contemporary, environments. You will develop important senior management skills, including strategic thinking, evidence-based decision making and data analysis.

This online programme allows you to study without a career break, enabling you to put your learning into practice from the start. You have the opportunity to draw on previous experiences and newly acquired knowledge to address business issues. You will discuss and debate as you work in collaboration with others to develop your understanding of theory and practice. You will consider issues from a global, ethical perspective developing your ability as an innovative, socially responsible leader.

Programme at-a-glance

Qualification

Master of Business Administration (MBA)

Study mode: online and part-time

Start dates: Throughout the year. See our website for upcoming dates.

Duration

30 months

Entry requirements

Professional experience: MBA candidates are normally expected to have a minimum of 3 years of substantive managerial experience in the private or public sector, including the management of budgets, people and projects.

Qualifications: Applicants should possess either:

- A minimum of a 2:1 class degree in any subject, equivalent to a UK bachelor's degree, or an equivalent professional qualification from a similar non-UK institution: or
- Non-graduates who possess extensive professional experience (more than 5 years) and/or a postgraduate qualification are encouraged to apply.

GMAT score: Although not mandatory, we encourage candidates who have undertaken the examination to submit their scores for consideration, these must be valid (attained with the last 5 years) by the time of entry.

All applicants must provide evidence that they have an English language ability equivalent to an IELTS (academic) score of 6.5. If you don't have an IELTS or equivalent certificate, you can take our free online English test to assess your proficiency. Check our website for further details.

What will I study?

Developing as a Manager and Leader (10 credits - core)	Strategic Management Simulation (10 credits - core)
International Business and the Global Economy (10 credits - core)	Management in Practice (10 credits - core)
Managing Financial Resources (10 credits - core)	2 elective modules from (2x10 credits): • Data Strategy and Analytics for Manager • Project Management • Global Leadership • Corporate Citizenship
Digital Strategic Marketing (10 credits - core)	
Managing Human Resources (10 credits - core)	
Operations and Supply Chain Management (10 credits - core)	
Strategic Advantage (10 credits - core)	MBA projects (60 credits - core)
Innovation and Entrepreneurship (10 credits - core)	Career Catalyst (zero credits - core)

Why Liverpool?

Learn from active research leaders. Our philosophy is to provide a research-connected student experience combining active learning and authentic assessment. You will learn from some of the world's leading academic experts who are passionate about their research activity.

Collaborate with a diverse student population. The wholly online nature of the course has helped in developing a globally diverse student body. This is a key feature of the programme allowing students to benefit from peer-to-peer learning through collaborating with fellow professionals from other cultures and industries from around the world.

Variety of assessment methods. You will be assessed through tasks and activities that reflect the contemporary workplace, enabling you to engage with live work-based issues. The course offers a wide range of assessments which enable you to develop and demonstrate your digital skills as well as your written, verbal and visual communication skills.

Where can this take me?

This MBA is designed to enhance and develop your existing experience of business and management, providing the chance for you to become more skilled and confident when leading and managing others, ethically and responsibly. It will also give you the opportunity to learn how to address and overcome complex business issues that frequently occur within a range of contexts.

If you already have some practical management experience, this programme can help to take you to the next level, whether that is a career change or a more senior-level role.

DIGITAL MARKETING

Digital marketing has revolutionised the global business landscape, reinvigorating marketing processes and creating an exciting, fast-paced and competitive marketing environment. These programmes ensure that you are equipped with the specialist knowledge and professional skills to become a digital marketing professional operating within this evolving business environment.

Our programmes focus on the role of digital marketing alongside existing marketing concepts and theories, and consider how this functions within the wider organisational strategy. The curriculum explores the essential aspects of digital marketing including consumer behaviour, digital communications, social media marketing, and branding. In addition, you will enhance your core business skills and understanding, including leadership, data and financial management, business ethics and sustainability, tailoring them to meet the needs of digital marketing practice.

Programme at-a-glance

Qualification	Duration
Digital Marketing MSc	24 months
Digital Marketing PGDip	16 months
Digital Marketing PGCert	8 months

Study mode: online and part-time

Start dates: Throughout the year. See our website for upcoming dates. The study duration of this programme is currently subject to change and final validation.

Entry requirements

All applications will be considered on a case-by-case basis. If you want to discuss your previous qualifications and experience before applying, please contact us now via LiveChat.

Applicants should possess either:

- A minimum of a 2:2 class degree in any subject, equivalent to a UK bachelor's degree; or
- Professional work experience in a related field and/or other prior qualifications will be considered on a case-by-case basis.

All applicants must provide evidence that they have an English language ability equivalent to an IELTS (academic) score of 6.5.

If you don't have an IELTS or equivalent certificate, you can take our free online English test to assess your proficiency. You don't need to prove your English ability if you are a national of, or have completed a qualification equivalent to a UK degree in, any of [these countries](#).

What will I study?

	MSc	PGDip	PGCert
Digital Marketing Strategy and Practice (15 credits)	*	*	*
Becoming a Leader (15 credits)	*	*	
Ethical and Sustainable Business Practice (15 credits)	*	*	
Finance and Data Analysis for Managers (15 credits)	*	*	
Consumer Behaviour (15 credits)	*	*	*
Digital Communications and Social Media Marketing (15 credits)	*	*	*
Brand Creation and Management (15 credits)	*	*	*
Research Methods (15 credits)	*	*	
Dissertation (60 credits)	*		

Why Liverpool?

High quality education and learning environment. The programme provides a comprehensive and high-level of education from an elite AACSB, EQUIS and AMBA accredited management school. Research-lead teaching will help to enhance your specialist knowledge, supported by a supportive and engaging online learning environment.

Collaborative learning. You will have to opportunity to study in global virtual cohorts, mirroring the diverse digital work environment and allowing you to develop the skills necessary for a digital marketing career within the real-world context of contemporary organisations.

Relevant assessment methods. All assessments have been developed to incorporate the key principles of authenticity and critical reflection to help you to link theory to practice and achieve your personal goals.

Graduate with enhanced skills and knowledge. You will graduate from this programme with the ability to be a highly effective digital marketing professional. You will be able to positively influence your organisation by implementing the knowledge and skills gained from your studies.

Where can this take me?

After completing this programme, you will be able to develop your existing marketing career, move into a role within the digital marketing sector or work within a general management position. Graduates will be equipped with the knowledge, skills, awareness and confidence to be highly effective managers and digital marketing professionals able to influence organisational strategy and practice.

You will have a clear understanding of the career opportunities available and have clarity over your career aims. Your understanding of opportunities will be enhanced by access to guest speakers from who are leaders in digital marketing through webcasts, webinars and though networking events. Furthermore, you will be able to access a broad range of marketing, management, and leadership positions in the private, public and voluntary sectors.

INTERNATIONAL HUMAN RESOURCE MANAGEMENT

The dynamic and diverse nature of contemporary organisations is creating new challenges for human resource management (HRM). Our programmes will help you develop as a HR practitioner, effectively operating in a globalised environment and adapting professional and organisational knowledge to new needs and contexts.

At the core of our programmes is the evolving role of HRM as a source of strategic value and influence in the organisation. Our curriculum develops core HRM skills such as managing performance, learning and development, change and conflict. This is blended with essential business skills tailored to the needs of HR practice, including leadership, data and financial management, business ethics and sustainability. Our programmes consider the international dimension of all core HRM practices and their impact on core business functions.

Programme at-a-glance

Qualification

International Human Resource Management MSc
International Human Resource Management PGDip
International Human Resource Management PGCert

Duration

24 months
16 months
8 months

Study mode: online and part-time

Start dates: Throughout the year. See our website for upcoming dates. The study duration of this programme is currently subject to change and final validation.

Entry requirements

All applications will be considered on a case-by-case basis. If you want to discuss your previous qualifications and experience before applying, please contact us now via LiveChat.

Applicants should possess either:

- A minimum of a 2:2 class degree in any subject, equivalent to a UK bachelor's degree; or
- Professional work experience in a related field and/or other prior qualifications will be considered on a case-by-case basis.

All applicants must provide evidence that they have an English language ability equivalent to an IELTS (academic) score of 6.5.

If you don't have an IELTS or equivalent certificate, you can take our free online English test to assess your proficiency. You don't need to prove your English ability if you are a national of, or have completed a qualification equivalent to a UK degree in, any of **these countries**.

What will I study?

	MSc	PGDip	PGCert
Strategic Human Resource Management (15 credits)	*	*	*
Becoming a Leader (15 credits)	*	*	
Ethical and Sustainable Business Practice (15 credits)	*	*	
Finance and Data Analysis for Managers (15 credits)	*	*	
Strategic Learning, Training and Development (15 credits)	*	*	*
Managing Change and Conflict (15 credits)	*	*	*
People and Performance Management (15 credits)	*	*	*
Research Methods (15 credits)	*	*	
Dissertation (60 credits)	*		

Why Liverpool?

Fully online and part-time. You will have the opportunity to study where and when it suits you, supported by a variety of learning materials and methods designed specifically for an online environment.

Develop into a business competent HR practitioner. The programme is designed to provide you with an understanding of both core HRM and business management disciplines, to help you understand, interpret and engage with your wider organisation and apply strategic influence.

Develop lifelong and critical learning. Your study activities are designed to equip you not only with practical knowledge and skills but will also enable you to develop practical judgement, critical self-awareness and the ability to reflect on and learn from your experiences.

Collaborative learning. You will study in diverse and global cohorts with the opportunity to share experiences of different cultures, organisations and industries, and to critically test and evaluate different HRM practices in different contexts.

Where can this take me?

Graduates will be able to develop existing careers in human resource management, move into a HRM role, or develop enhanced managerial careers with a focus on people management. Students will graduate with enhanced skills and knowledge that enable them to be highly effective managers and HR professionals, who are also able to strategically influence their organisations through people and human resource management and development.

The programmes will help you develop an understanding of the career opportunities within human resource management, including at an international scale. You will be supported to reflect on the key knowledge, skills and attributes that you develop both within and outside of the programme. You will also maintain a personal portfolio of learning, and construct a personal development plan.

MANAGEMENT

Our programme is designed to equip you with the intellectual learning and skills to pursue a career within management. It focuses on nurturing and shaping you into a manager capable of leading in the dynamic business world.

Our curriculum is ideal if you're looking to pursue a career in international management, but want to develop a detailed understanding of global business issues, or even study a business subject for the first time. Our programmes provide a thorough understanding of management concepts such as decision-making, learning and development, and strategy alongside core business skills. This will equip you with the tools and confidence required to succeed as a manager in international business.

Programme at-a-glance

Qualification	Duration
Management MSc	24 months
Management PGDip	16 months
Management PGCert	8 months

Study mode: online and part-time

Start dates: Throughout the year. See our website for upcoming dates. The study duration of this programme is currently subject to change and final validation.

Entry requirements

All applications will be considered on a case-by-case basis. If you want to discuss your previous qualifications and experience before applying, please contact us now via LiveChat.

Applicants should possess either:

- A minimum of a 2:2 class degree in any subject, equivalent to a UK bachelor's degree; or
- Professional work experience in a related field and/or other prior qualifications will be considered on a case-by-case basis.

All applicants must provide evidence that they have an English language ability equivalent to an IELTS (academic) score of 6.5.

If you don't have an IELTS or equivalent certificate, you can take our free online English test to assess your proficiency. You don't need to prove your English ability if you are a national of, or have completed a qualification equivalent to a UK degree in, any of **these countries**.

What will I study?

	MSc	PGDip	PGCert
Management Perspectives and Practices (15 credits)	*	*	*
Becoming a Leader (15 credits)	*	*	*
Ethical and Sustainable Business Practice (15 credits)	*	*	*
Finance and Data Analysis for Managers (15 credits)	*	*	*
Strategic Management and Contemporary Organization (15 credits)	*	*	
Identity, Learning and The Global Professional (15 credits)	*	*	
Entrepreneurship and Innovation (15 credits)	*	*	
Research Methods (15 credits)	*	*	
Dissertation (60 credits)	*		

Why Liverpool?

Research-connected teaching. Cutting-edge research findings feed into our syllabus, developing your critical understanding of the nature of research and enquiry, both in subject specific and generic contexts. You will enhance your practical research skills through engaging in enquiry, alongside other forms of interdisciplinary research activities. This approach will encourage you to become a producer and not just a consumer of knowledge.

Digital fluency. You will be able to effectively utilise digital platforms to connect, collaborate and communicate in academic and professional contexts. You'll develop a critical perspective open to continuously developing digital practices within this business discipline.

Prepare for the dynamic business world. Your study activities have been designed to actively enable you to thrive in conditions of ambiguity and uncertainty. This will enable you to view problems from multiple perspectives and make decisions while handling risk.

Where can this take me?

Students will graduate from their programmes with the skills necessary to work and engage in a variety of business-related roles within organisations. This includes marketing, finance, strategy, international development, data analytics and research, relationship management, and human resources.

You will be able to succeed in a wide range of business and management positions, including roles within consultancy, the financial industry, large retail and manufacturing organisations. The content and delivery of the programme will equip you to be an effective business and management candidate for a range of national and international positions.

Graduates may also be able to follow a research career focusing on management. From an employability perspective the programme is committed to embedding requisite skills through both formative and summative assessment at module level, and through guest talks, networking events, and publishing opportunities outside of module requirements.

FINANCE AND INVESTMENT

MANAGEMENT

The best and most adaptive businesses today prioritise financial and investment management to improve the profitability of the organisation, provide economic stability, and increase the valuation of the organisation.

This programme will equip you with the intellectual, learning, and professional skills you will need to make an outstanding contribution in your organisation. The content of this programme is aligned with the body of knowledge of the Chartered Financial Analyst (CFA®) qualification and will equip you with the skills and competencies you will need to undertake formal CFA® Level 1 examinations. This means that you will have not only developed excellence in academic skills from a world class university but will also be competent in the practical skills that future employers in the profession demand.

Programme at-a-glance

Qualification	Duration
Finance and Investment Management MSc	24 months
Finance and Investment Management PGDip	16 months
Finance and Investment Management PGCert	8 months

Study mode: online and part-time

Start dates: Throughout the year. See our website for upcoming dates. The study duration of this programme is currently subject to change and final validation.

Entry requirements

All applications will be considered on a case-by-case basis. If you want to discuss your previous qualifications and experience before applying, please contact us now via LiveChat.

Applicants should possess either:

- A minimum of a 2:1 class degree in any subject, equivalent to a UK bachelor's degree. Those with a 2:2 honours degree will be considered on an individual basis; or
- Professional work experience in a related field and/or other prior qualifications will be considered on a case-by-case basis.

All applicants must provide evidence that they have an English language ability equivalent to an IELTS (academic) score of 6.5.

If you don't have an IELTS or equivalent certificate, you can take our free online English test to assess your proficiency. You don't need to prove your English ability if you are a national of, or have completed a qualification equivalent to a UK degree in, any of [these countries](#).

What will I study?

	MSc	PGDip	PGCert
Corporate Finance (15 credits)	*	*	*
Equity and Fixed Income (15 credits)	*	*	*
Portfolio Management (15 credits)	*	*	*
Financial Institutions, Regulation and Ethics (15 credits)	*	*	*
Derivatives and Alternative Investments (15 credits)	*	*	
Financial Reporting and Analysis (15 credits)	*	*	
Economics in Financial Markets (15 credits)	*	*	
Research Methods (15 credits)	*	*	
Dissertation (60 credits)	*		

Why Liverpool?

Triple accredited management school. The programme has been developed in partnership with the University of Liverpool's AACSB, AMBA, EQUIS accredited management school.

Cross-cultural learning and experiences. You will learn amongst a globally diverse student body, benefiting from cross-cultural learning and networking opportunities.

A collaborative learning environment. You will work both individually and collaboratively with peers, which facilitates an important goal of knowledge sharing based on each other's experiences.

Relevant assessment methods. You will undertake authentic assessments, encouraging you to apply theory to practice and look at real world issues, cultivating curiosity and creativity as well as a range of management skills.

Where can this take me?

The MSc Finance and Investment Management is designed to equip current finance professionals and those seeking a career in the area with the intellectual, learning, and professional skills they will need to make an outstanding contribution in their organisations. Graduates will not only develop the technical skills necessary to operate effectively in the field of finance but will be able to practically apply these skills and understand the range of impacts that finance has on different business activities.

PROJECT MANAGEMENT

Project management is a critical practice within any business or organisation that uses knowledge of processes, methods, skills, and techniques to achieve project objectives according to specific criteria within agreed parameters.

This programme is designed to facilitate the development of technical competence in areas including risk management, monitoring and control of projects, and procurement, as well as a core understanding of operations management principles, which can plague project delivery. Learning will be action and practice-focused, with students testing out theory and knowledge within their own current or previous organisational contexts and experience and seeking out actionable knowledge in response to current problems they face.

This programme is accredited by the Association for Project Management (APM) – the only chartered membership organisation for the project profession. This prestigious academic accreditation identifies courses and modules that meet rigorous criteria for course content and quality, and validates the high standard of the programme.

Programme at-a-glance

Qualification	Duration
Project Management MSc	24 months
Project Management PGDip	16 months
Project Management PGCert	8 months

Study mode: online and part-time

Start dates: Throughout the year. See our website for upcoming dates. The study duration of this programme is currently subject to change and final validation.

Entry requirements

All applications will be considered on a case-by-case basis. If you want to discuss your previous qualifications and experience before applying, please contact us now via LiveChat.

Applicants should possess either:

- A minimum of a 2:2 class degree in any subject, equivalent to a UK bachelor's degree; or
- Professional work experience in a related field and/or other prior qualifications will be considered on a case-by-case basis.

All applicants must provide evidence that they have an English language ability equivalent to an IELTS (academic) score of 6.5.

If you don't have an IELTS or equivalent certificate, you can take our free online English test to assess your proficiency. You don't need to prove your English ability if you are a national of, or have completed a qualification equivalent to a UK degree in, any of **these countries**.

What will I study?

	MSc	PGDip	PGCert
Contemporary Project Management (15 credits)	*	*	*
Risk and Uncertainty in Project Planning (15 credits)	*	*	*
Portfolio, Programme, and Project Execution (15 credits)	*	*	*
Leading and Managing Project Teams (15 credits)	*	*	*
Strategic Procurement Management (15 credits)	*	*	
Supply Chain Operations Management (15 credits)	*	*	
Finance and Data Analysis for Managers (15 credits)	*	*	
Research Methods (15 credits)	*	*	
Dissertation (60 credits)	*		

Why Liverpool?

Focus on management skills. The programme has been developed in partnership with the University of Liverpool's AACSB, AMBA, EQUIS accredited management school.

Relevant assessment methods. You will undertake authentic assessments, encouraging you to apply theory to practice and look at real world issues, cultivating curiosity and creativity as well as a range of management skills.

Cross-cultural learning and experiences. You will learn amongst a globally diverse student body, benefiting from cross-cultural learning and networking opportunities.

Develop lifelong and critical learning. Your study activities are designed to equip you not only with practical knowledge and skills but will also enable you to develop practical judgement, critical self-awareness, and the ability to reflect on and learn from your experiences.

Where can this take me?

Graduates will be equipped with the knowledge, skills, awareness, and confidence to be highly effective project managers and professionals able to influence organisational strategy and practice. After completing this programme, you will be able to develop your existing career, move into a project management role within any sector or work within a general project management position.





Our Healthcare Leadership programmes will develop the capacity of those in a healthcare role to lead proactively, reflectively, and with confidence, as well as enabling them to make effective decisions using a pragmatic, evidence-based approach. Our graduates are equipped to deliver ongoing improvements for patient or service user care and healthcare systems.

Welcome to the Management School

in collaboration with

The School of Medicine

The Management School in collaboration with the School of Medicine have designed unique interdisciplinary programmes to educate today's healthcare professionals for tomorrow's healthcare challenges. We provide postgraduate programmes that support your career development and equip you with the confidence, knowledge and skills that are essential for success within the 21st century healthcare environment.

PROGRAMME AREAS

Healthcare Leadership

HEALTHCARE LEADERSHIP

Our Healthcare Leadership programmes are jointly delivered by our triple-accredited Management School and the School of Medicine which is one of the largest medical education providers in the UK.

Through our uniquely interdisciplinary programmes you will have the opportunity to explore leadership and management concepts, models and frameworks and learn how to apply them to healthcare environments, from a small practice to larger settings, of both a clinical and non-clinical nature.

In addition to learning how to lead at individual, team, organisational and national levels, you will gain an understanding of key contemporary issues within changing healthcare contexts and the ability to recommend innovative and high-quality solutions.

Programme at-a-glance

Qualification	Duration
Healthcare Leadership MSc	24 months
Healthcare Leadership PGDip	16 months
Healthcare Leadership PGCert	8 months
Healthcare Leadership PGAward	4 months

Study mode: online and part-time

Start dates: Throughout the year. See our website for upcoming dates. The study duration of this programme is currently subject to change and final validation.

Entry requirements

All applications will be considered on a case-by-case basis. If you want to discuss your previous qualifications and experience before applying, please contact us now via LiveChat.

Applicants should possess either:

- A minimum of a 2:2 class degree in any subject area, equivalent to a UK bachelor's degree; or
- Professional work experience in other settings and/or other prior qualifications will be considered on a case-by-case basis.

All applicants must provide evidence that they have an English language ability equivalent to an IELTS (academic) score of 6.5.

If you don't have an IELTS or equivalent certificate, you can take our free online English test to assess your proficiency. You don't need to prove your English ability if you are a national of, or have completed a qualification equivalent to a UK degree in, any of [these countries](#).

What will I study?

	MSc	PGDip	PGCert	PGAward
Understanding Leadership (15 credits)	*	*	*	*
Leading Strategic Management and Implementation of Healthcare Services (15 credits)	*	*		
Leading Complex Change in Healthcare Settings (15 credits)	*	*	*	*
Leading People and Teams in Healthcare Organisations (15 credits)	*	*		
Leading Innovation in Healthcare (15 credits)	*	*		
Quality Management and Safety in Driving Safe Healthcare (15 credits)	*	*	*	
Healthcare Finance (15 credits)	*	*	*	
Research Methods (15 credits)	*	*		
Work Based Project OR Dissertation (60 credits)	*			

Why Liverpool?

Experience a unique interdisciplinary programme. Our Healthcare Leadership programmes are delivered in collaboration with the School of Medicine at the University of Liverpool, one of the largest medical education providers in the UK. You will learn from leading professionals in academic, and healthcare leadership positions, benefiting from real-life experiences of leading and managing healthcare across a wide range of services and organisations.

Benefit from a gold standard education. The Management School is among an elite group of business schools to be triple-accredited with AACSB, AMBA and EQUIS. Our pioneering School of Medicine was established in 1834 and has been at the forefront of medical practice and research for over 180 years.

Take part in a collaborative and active learning approach. You will be encouraged to exchange ideas and experiences via discussion forums and to conduct collective analysis of case studies, which facilitates collaborative decision making and problem solving.

Study career focused modules to prepare for working in varied healthcare settings. The activities and assessments enable you to engage with work-based issues within the healthcare arena, including analysing and reflecting on your own work organisation and role.

Where can this take me?

On completion of your programme, you will have the skills required to succeed in leadership and managerial roles within healthcare organisations, healthcare governing bodies, and community healthcare organisations, as well as in related sectors such as financial and consulting. These could include senior positions in clinical leadership, management, strategy, international development, research, finance, human resources and marketing.

What's next?

We know there's a lot to consider when applying for a postgraduate degree. We have put together some key information over the next few pages to hopefully make things a little easier for you...



Your road to online study with the University of Liverpool

Join one of our virtual events at online.liverpool.ac.uk/events



Submit your application

We have start dates throughout the year and applications can be made at any time.

Make an enquiry

You will be assigned a personal admissions adviser who will answer any questions you have about the programme, fees and entry requirements.

Download a prospectus from our website or complete our contact form.

Find the right programme

Research your options by browsing our website and prospectus.

Receive a decision

Once your application, including supporting documents, is submitted you will receive an outcome from our admissions team within 10 working days.

Applications are reviewed on a case-by-case basis by our admissions and academic staff.

Attend a pre-enrolment review

If you are successful, your admissions adviser will invite you to a short pre-enrolment review to make sure you have everything you need to start your studies.

You will be invited to a welcome session by the student support team. This will introduce you to the Virtual Learning Environment (VLE) and prepare you for your induction module.



WELCOME TO YOUR PROGRAMME

Accept your offer of a place

The next step is to accept your offer and pay your tuition fee deposit. You are now ready to begin your online studies on your selected start date.

Your application

We welcome applications from all over the world, and it's our aim to make the process of applying as smooth as possible.

MAKING YOUR APPLICATION

Applications for our online postgraduate programmes should be made via our website at online.liverpool.ac.uk/apply.

Our programmes have multiple intakes throughout the year giving you the flexibility to decide which start date is right for you.

ADMISSIONS ADVISERS

As soon as you enquire about or apply for one of our programmes, you'll be assigned an admissions adviser who will be on hand throughout the process, explaining how your application will be assessed and answering any questions you have.

ENTRY REQUIREMENTS

For full details on the online postgraduate programmes we offer and detailed entry requirements, visit online.liverpool.ac.uk/all-programmes

If English is not your first language, you will be asked to provide proof that your English language skills meet our minimum requirements. We accept all major English language qualifications such as IELTS and TOEFL, but if you don't have one of these qualifications, our admissions team will ask you to take a free online English test.

DISABLED STUDENTS

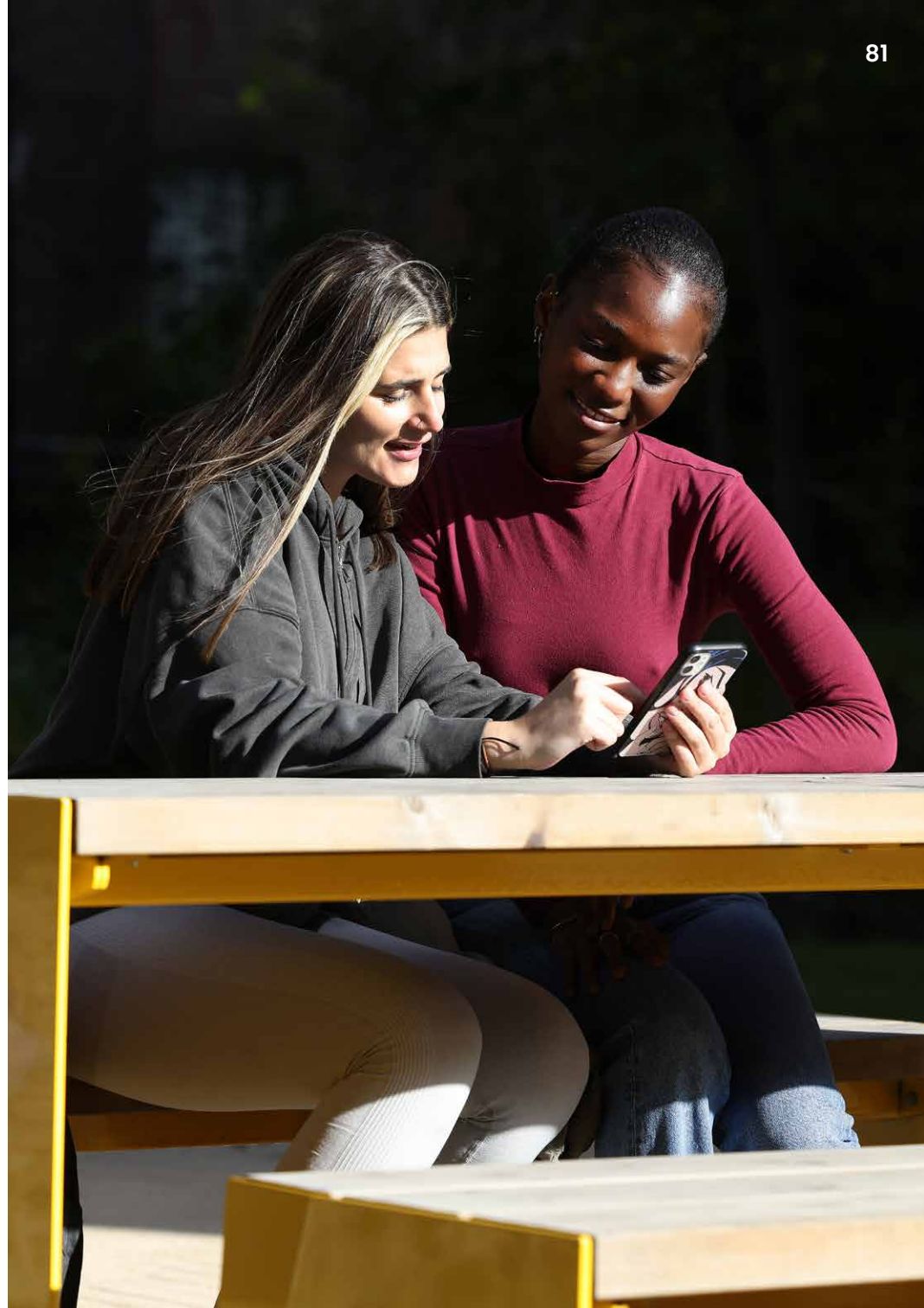
We give equal consideration to all applicants and welcome applications from students with disabilities. Our admissions team will be happy to discuss your support needs before you submit your application.

MATURE STUDENTS

We welcome applications from candidates who are not applying directly from school or college, or who have non-standard qualifications, or who wish work or life experience to be considered as part of their application.

DIVERSITY AND EQUALITY

We attach the greatest importance to our policies and activities to promote diversity and equality of opportunity. Full details on these policies can be found online at liverpool.ac.uk/diversity-and-equality.



Tuition fees

Our tuition fees are fully inclusive of all study materials, tuition, assessments and resits. They are the same for all students and there are no hidden costs.

POSTGRADUATE FEES

The fees for our online postgraduate programme start dates in 2025/26 are as follows:

Programme	Credits	2025/26 full tuition fee*
Postgraduate award	30	£2,893
Postgraduate certificate	60	£5,786
Postgraduate diploma	120	£11,572
Master of Science	180	£17,357
Master of Laws (LLM)	180	£17,357
Master of Public Health	180	£17,357
Master of Business Administration	180	£23,824

The tuition fees shown are net of any applicable sales tax payable by you in your country of residence. Where we are required to add sales tax at the local statutory rate, this will be added to the programme fees shown and confirmed during the payment process.

*Programme fees are reviewed annually. We reserve the right to increase programme fees in line with the RPI-X index. Please read our **terms and conditions** for more details.



PAYMENT OPTIONS

We offer a range of payment options to ensure our programmes are as accessible as possible to everyone who wishes to study with us.

Students living in England may be eligible for a Master's Loan to cover some of the costs of their postgraduate degree.

If you are not eligible for a student loan, we offer a simple monthly payment plan to spread the cost of your programme over the duration of your studies. Alternatively, if you choose to pay the full tuition fee upfront, you will receive a 5% discount.

Finally, we also offer a 21-day money back guarantee, so that if you decide the programme is not for you within the first 21 days then you will receive a full refund**.

Payments can be made via our online payment portal at online.liverpool.ac.uk/payment.

DISCOUNTS AND SCHOLARSHIPS

Full payment discount

If you choose to pay for your postgraduate programme up-front, we will apply an additional 5% discount to your tuition fee.

Regional Scholarships

Regional Scholarships of up to 20% are available for international students based overseas in eligible countries. To find out more, please contact our admissions team.

Alumni discount

University of Liverpool graduates going on to study an online master's programme can benefit from a 10% discount on the tuition fees.

Further information

For further information on the discounts and scholarships available, including any temporary scholarships on offer, please visit our website at: online.liverpool.ac.uk/fees-anfunding/discounts-and-scholarships

** To find out more read, our terms and conditions at online.liverpool.ac.uk/policies

Online Programmes Prospectus

University of Liverpool
L69 7ZX

Enquiries and applications
T: +44 (0)151 318 4466

online.liverpool.ac.uk

**We are big ideas and bold,
independent thinkers.**

**Individual triumphs
and world firsts.**

**Lively debates and
life-changing research.**

**Flashes of inspiration and
hard-earned breakthroughs.**

We are the original redbrick.

Information provided is correct at time of publishing
and is subject to change.

**THE UNIVERSITY OF LIVERPOOL IS A MEMBER OF THE ELITE
RUSSELL GROUP OF RESEARCH-LED UK UNIVERSITIES**